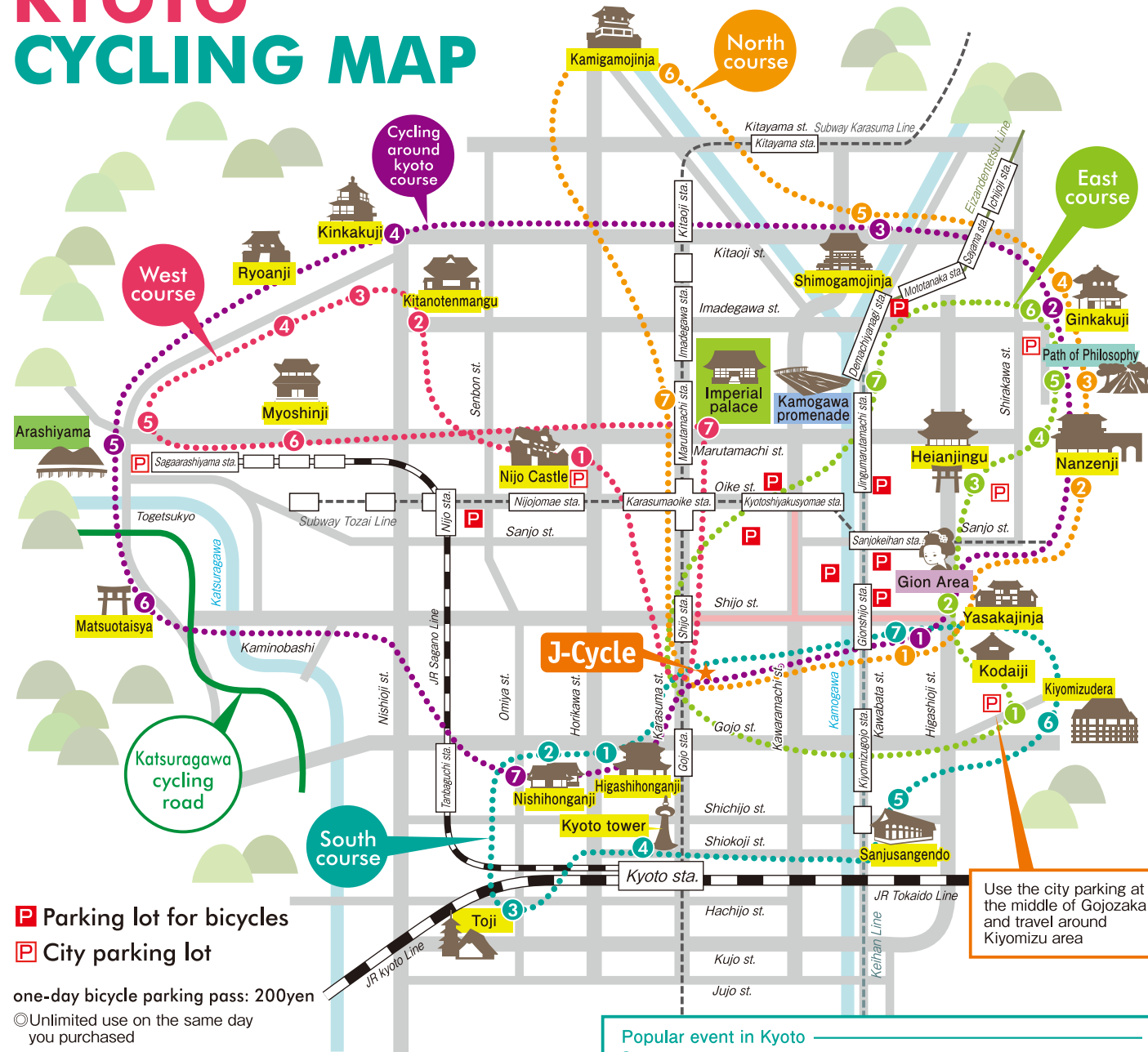


KYOTO CYCLING MAP



P Parking lot for bicycles
P City parking lot

one-day bicycle parking pass: 200yen
 ○ Unlimited use on the same day you purchased

— No cycling zone
 *Time-Limited cycling zone

if you park several city parking lot, please buy one-day bicycle parking ticket. Tickets are available at Kiyomizudera, Okazaki park, Ginkakuji, Nijo Castle, and Arashiyama

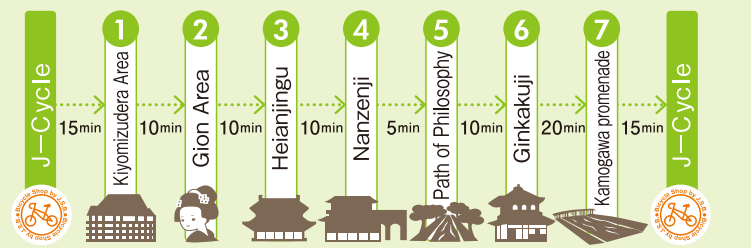
Popular event in Kyoto

- Aoi-Matsuri Date... May 15th
- Mifune-Matsuri Date... The third Sunday in May
- Gion-Matsuri Date... July 14th to 16th
 Yamaboko Floats Parade on July 17th
 Hanagasa Floats Parade on July 24th
- Kyoto (Daimonji) Gozan Fire Festival Date... August 16th
- Jidai-Matsuri Date... October 22th

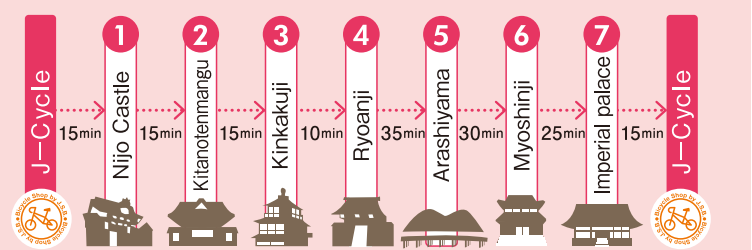
Use the city parking at the middle of Gojozaka and travel around Kiyomizu area

Model Courses

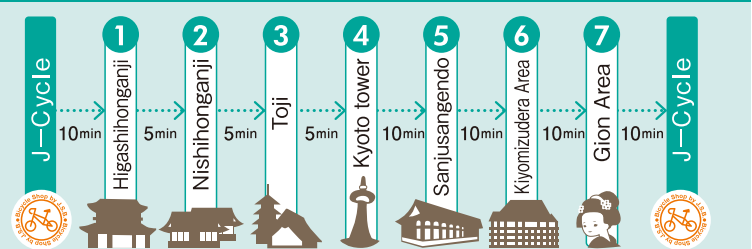
East course <Time...about 1.5 hours>



West course <Time...about 2 hours and 40 minutes>



South course <Time...about 1 hours>



North course <Time...about 2 hours>



Cycling around kyoto course <Time...about 3 hours>

